

# SONNENWELT

3-language exhibition in German, English and Czech

## Visitor Information

We are delighted that you are interested in SONNENWELT! Here you will find everything you need to know as a visitor. If you should still have any questions, please do not hesitate to call (02815/77 270 50) or email us ([office@sonnenwelt.at](mailto:office@sonnenwelt.at))!

## Opening times

Season 2026	22 March - 1 November 2026
Tuesday - Sunday	10 am till 4 pm (last entry at 3 pm)
Monday (except feast day)	closed
Special opening day	Monday, 26 October 2026

For groups booked in advance we also open on Mondays and during the winter break.

## Prices 2026

Adult	14,00 €
Children (6-15 years)	10,00 €
Children under 6 years	free
Families (2 adults and 1 child)	33,00 €
Families (2 adults and 2 children)	40,00 €
Every further child	8,00 €
Modern multimediaguides in German, English and Czech	3,00 €

We offer free tours in German for individuals from Tuesday till Thursday starting at 10:30 am and 2 pm and on Friday starting at 10:30 am (except feast day).

## Reduced prices

Senior Citizens (over 60), students (up to 25), military/national service personell, handicapped people (only with ID)	12,00 €
Groups (of over 20 people)	12,50 €
School classes	9,00 €

Free entry with the „Niederösterreich Card“ (valid for groups - extra cost for the tour 4 €).



## Contact

SONNENWELT  
Sonnenplatz 1  
3922 Großschönau  
T: +43 2815 77 270 50

E-mail: [office@sonnenwelt.at](mailto:office@sonnenwelt.at)





# Visit SONNENWELT



SONNENWELT is wheelchair access friendly.

There is a wheelchair user friendly car park right beside the entrance. There is also barrier-free access to the toilets.



SONNENWELT ist strolly friendly.

Wrapping options as well as family parking spaces are available.



Please understand that dogs are not allowed in SONNENWELT (except for guidedogs).



There are parking spaces available. There is also a separate car park for wheelchair users and a family car park.



Reaching us via public transport:

The closest train stations are in Gmünd and Zwettl.

Information can be found here:

<http://www.waldviertel-linie.at/>

<http://www.oebb.at/>

## MEDIA

Thanks for your interest in SONNENWELT. Please help us to spread the word about SONNENWELT. You can find free promotional text and photo material here!

We would be happy to send you media information and photos by e-mail. Please just send an email to: Verena Prinz

Mail: [v.prinz@sonnenplatz.at](mailto:v.prinz@sonnenplatz.at)

Phone: +43 2815 77270-18





# Journey through SONNENWELT

SONNENWELT whisks you off on an exciting course over 2000m<sup>2</sup>: from the energy efficient nomadic tents of 10000 years ago over the clever techniques of the Ancient Egyptians and Romans through to high-tech "made in Austria". On the way you will not only get practical tips for your own house but can also prove your knowledge and test your skills in challenging games!

Get in the zone on this journey through 12 time zones, travel back to the beginnings of our planet and of all energy and click yourself through the ages!

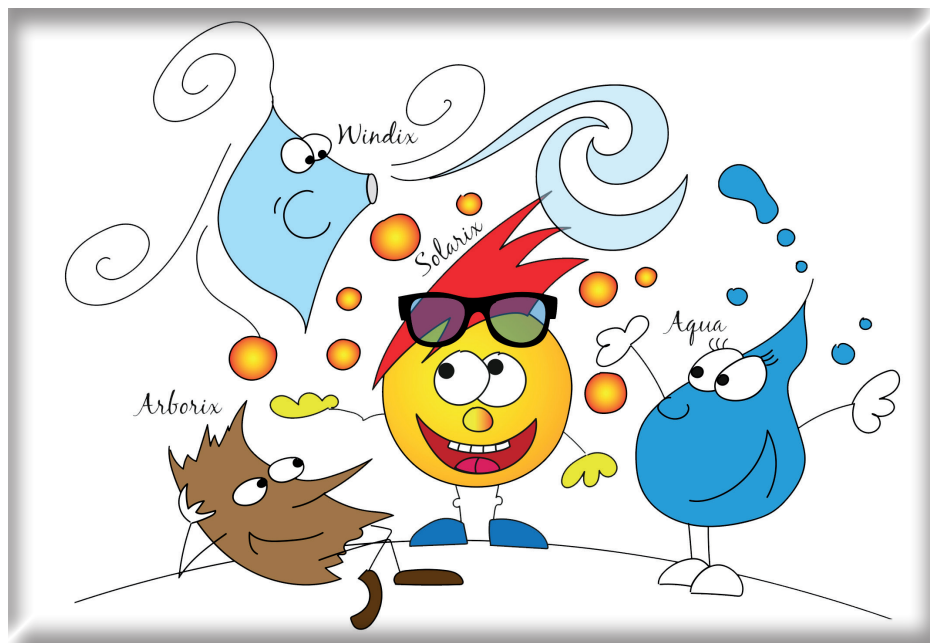
## SPECIAL EXHIBITION

The special exhibition in the SONNENWELT Großschönau entitled „The Powerchanger“ takes you into the fascinating world of renewable electricity: from sustainable renewable energy production to efficient use in homes and mobility.

Electricity is incredibly versatile and accompanies our daily life around the clock! But what happens in the event of a black-out? How can electricity be generated from renewable sources? What can we all contribute? Get to know the Powerchanger and find answers to all these questions!

### Informative and interactive

How much oil can be really saved by switching to a renewable energy form? What does it all have to do with me? And why should you use renewable energy for yourself? All these questions are answered and new standards of energy production are pointed out informative and convincingly at the same time. Some models invite you to try out and demonstrate how these techniques work.



### Versatile and innovative solutions

In cooperation with various innovative, Austrian companies, a wide range of renewable energy forms are presented. Visitors will get a clear picture of how diverse the possibilities are to be independent of fossil fuels and to use energy sustainably. „Renewable energy forms also make sure that the future generations will have sufficient resources at their disposal. Everyone can benefit, whether it is lower energy costs or a comfort gain. This special exhibition explains how to make the use of renewable energy available to all age groups. Not only friends of technology, rather all visitors will find themselves here,“ emphasizes Martin Bruckner, one of the initiators of the SONNENWELT.





# Further Offers SONNENWELT

## ENERGY-EXPERIENCE-PLAYGROUND

The spacious Energy-Experience-Playground right beside SONNENWELT is dedicated to the four elements: fire, water, earth and air. The 1st stone labyrinth in the Waldviertel region is to be found here! Beside it you can test your skill for example by pumping water with an Archimedeian spiral. Of course there is also a climbing frame, swings, slides and treehouses. This unique playground is free for everyone to use.



## CAFÉ

After visiting SONNENWELT you can take refreshments in the Café. We offer you a variety of beverages – ranging from coffee to wine.



## SHOP

There is a wide variety of articles in shop. You can find everything that a real Waldviertel fan could wish for here – from poppy seed and potato products, Waldviertel whisky and liqueurs to Waldviertel cook books. Above and beyond that we also offer – in tune with the SONNENWELT theme – for example solar toys and books for all age groups.





# SONNENWELT

## Groups & Schools

### OFFERS FOR SCHOOL GROUPS

The guided tours allow children and young people the chance to familiarize themselves with the contents of the exhibition in an interesting and appropriate manner. During this 1.5 hour tour the trained personnel will interact with the different age groups and deliver the information in an appealing fashion. The interactive exhibition tour is especially suitable for school groups. In each of the 12 time zones the guide imparts the most important information. Touching and trying things out is the name of the game at the numerous interactive game stations.

### Opening times und prices for school groups

Groups booked in advance are welcome anytime (also during the winter closing).



Special offer for school groups	9,00 € per student
Accompanying persons	free
Guided tour in German or modern multimediaguides in English	no extra charge
Duration	1.5 hours

### TOUR GROUPS

Take a guided tour around SONNENWELT and follow the history of humanity over the last 10000 years. Discover the wisdom of ancient cultures and paths towards a sunny future with our trained guides. During the 1.5 hour long tour you will be presented with the key contents of the exhibition and you can also try things out first hand at the numerous interactive stations.

After an exciting journey through SONNENWELT why not spend some time in the Café and the Waldviertler Regional Specialty Shop.



### Opening times und prices for tour groups

Groups booked in advance are welcome anytime (also during the winter closing).

Attractive group offer	12,50 € per person
Guided tour in German or modern multimediaguides in English	no extra charge
Duration	1.5 hours

Book now by contacting us at 02815/77270-50 or [office@sonnenwelt.at](mailto:office@sonnenwelt.at). We are happy to recommend other nearby tourist attractions which are well worth a visit, give culinary tips or even help you plan your journey.





# Accommodation in Großschönau

## Bruckner-Hipp Bio-Farm

Bruckner-Hipp Bio-Farm is ideal for families. Along with beautiful rooms it also has an indoor playground, a book corner and a games corner. Adults can avail of a Roman bath with tepidarium, a heated sand bed and a steam shower. SONNENWELT is about a 5 minutes' drive from Bruckner Bio-Farm.

Wörnharts 2  
3922 Großschönau  
Tel./Fax: 02815 6373  
[www.biobauer-bruckner.at](http://www.biobauer-bruckner.at), [office@biobauer-bruckner.at](mailto:office@biobauer-bruckner.at)



## Schönauerhof Ertl

Besides delicious regional treats from the kitchen, Schönauerhof also offers comfortable rooms to relax in. In the morning you can enjoy a sumptuous breakfast buffet and the wide ranging lunchtime menus including diet options are designed to meet all possible tastes. Schönauerhof is a 5 minutes' walk away from SONNENWELT and an exciting day full of adventure all to do with energy.

Großschönau 2  
3922 Großschönau  
Tel: 02815 6201







# Making of SONNENWELT

The hall where SONNENWELT is located was built in 2011. The Research and Competence Center for Building and Energy in Großschönau was opened on 16.11.2011. We have been busy perfecting SONNENWELT since 01.01.2011. The idea behind it was to spread the ideas of sustainable, resource and energy efficient building practices, renovation, living and lifestyle. The municipality of Großschönau and indeed the Sonnenplatz Großschönau have been working tirelessly towards this goal for years. The contents of the exhibition were created in co-operation with Kristian Faschingeder and Oliver Schürer (TU Vienna), pla.net architects (Vienna), the Designerin Lena Panzlau (Berlin) and rapp wimberger Kultur- und Medienprojekte (Vienna).



*Left to right: Curator Kristian Faschingeder, Museum educator Christian Rapp, Project initiator Martin Bruckner, Project supervisor Manuela Binder, Member of Parliament Johann Hofbauer, Architect Gerhard Abel, Graphic Lena Panzlau, Project initiator Josef Bruckner, Architect Oliver Cmyral, Technical Manager Christian Hipp and Project supervisor Maria Weigl-Pollack*

A team from FH St.Pölten (IC\M/T – Institute für Creative\Media/Technologies) created a game for the Multimedia-Guide which enables visitors to build their very own house in the “All about Passive Houses” zone. There are several different choices available! Points are not only awarded for ecological but also for inexpensive building techniques along with preserving quality of life. The Multimedia-Guide was provided and programmed by the “Die Informationsgesellschaft mbH” from Bremen. The interactive analogue and digital media stations were created by Althaler + Oblasser OG, Dominikus Guggenberger, General Laser Tochev & Tochev OG, cat-x exhibitions, Upgrade Energiesysteme Walter Pehn and Manfred Horak. The scenographic setups come from Atelier Wunderkammer, the graphic production was undertaken by Lang+lang Gesellschaft m.b.H. Also involved were: Mokesch Bau- und Zimmermeister Ges.m.b.H, Tischlerei Raimund Fuchs, Malerei Fölk, Elektro Rauch, Johann Winkler Ges.m.b.H., HAIDER Fenster-Türen-Möbelstudio e.U., Carpenter Karl Dorn, EHR – EDV Hipp Roland and Folienprofi Roland Benischek. Lighting was provided by Klangfarbe sound & light. The introductory film was produced by STANZLmedia.

Sponsors:



EUROPEAN UNION  
European Regional  
Development Fund

